

Saving lives in the West Midlands

Information about **health research**
and making **care services better**



What is in this booklet

About this booklet	3
What is the West Midlands Secure Data Environment?	4
How we will do this	8
Get involved	10
Your rights	11
Other rights you have.....	13
Find out more	14

About this booklet



This booklet is from the West Midlands Secure Data Environment.



It explains how we use **health information** to help everyone in the West Midlands.

Health information includes things like:

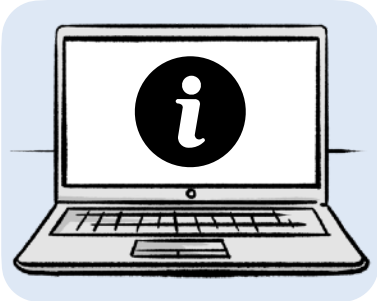


- hospital appointments



- information about any illnesses you have or medicines that you take.

What is the West Midlands Secure Data Environment?



The NHS owns and runs the **West Midlands Secure Data Environment**.



It is where we keep health information that **researchers** and health and care staff can use to do their job.



Researchers are people who do **research**.

Research means collecting information and using it to find things out.

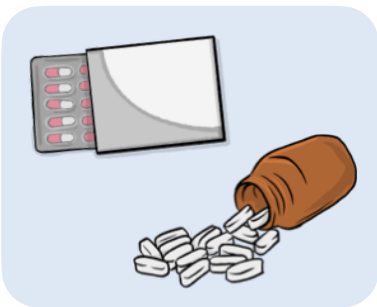


What researchers learn can help make things better.

The NHS lets researchers and health and care staff look at people's information to:



- learn how to keep everyone healthier

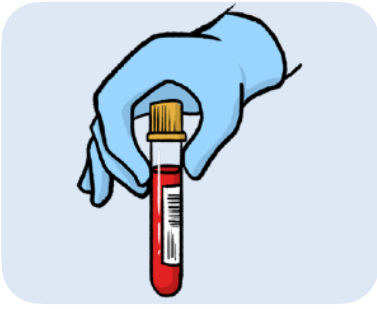


- invent new medicines



- make health and care services work better.

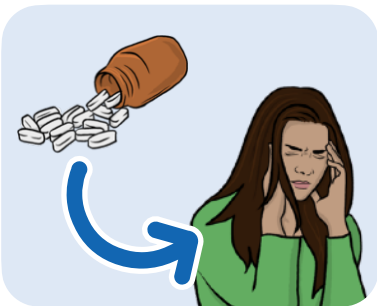
Researchers and health and care staff look at information such as:



- blood test results



- x-rays

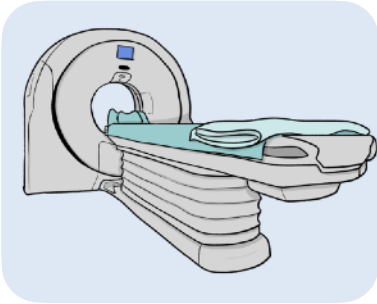


- how medicines might affect people.

Because of health research:



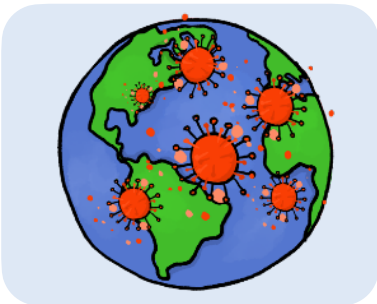
- The number of women who are still alive after having breast cancer is double what it was 50 years ago.



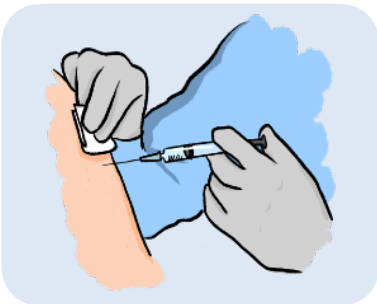
- CT and MRI scans happen every day in hospitals. CT and MRI scans take pictures to check whether someone has a disease or injury inside their body.



- A new **Coronavirus vaccine** was made quickly, saving millions of people's lives.



Coronavirus is an illness that has spread around the world. It can affect your lungs and breathing.



Vaccines are injections or jabs that help to stop you from becoming ill.

How we will do this

We only let researchers and health and care staff see information that:



- they need for their work



- they can use to help people.



We use the best and most up-to-date **technology** to keep people's health information as safe as possible.



Technology is things like computers and software.

Software is what makes computers do the things you want them to do.



Local people, like you, are involved in making sure the West Midlands Secure Data Environment stays as safe as possible.

Get involved



You can get involved in the West Midlands Secure Data Environment.

If you would like to take part or tell us what you think, you can contact us about:



- Events that we will be running in the West Midlands.



- Becoming a member of our **Patient and Public Advisory Group**.

A **patient and public advisory group** is a group of people who help the NHS do things in the right way for patients.

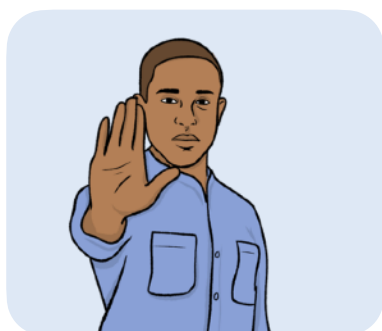


If you are interested in getting involved you can email us at:
mlcsu.involvement@nhs.net

Your rights

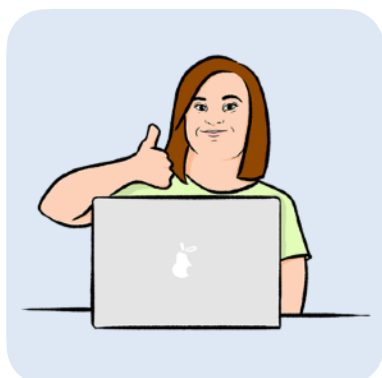


Rights are things that every person is allowed to have and do, like the right to be safe and the right to vote.



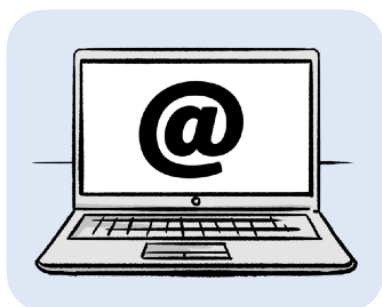
If you do not want us to use your information for research and for making health and care services better, you have the right to say no.

This is called an **opt-out**.



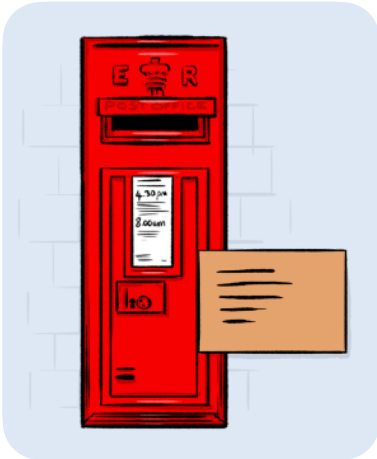
On our website, you can fill in a form to opt out of projects that are using the West Midlands Secure Data Environment:

www.westmidlandssde.nhs.uk/your-data/local-data-opt-out/



Once you have filled in the form you can email it to us at:

WMSDEOptout@uhb.nhs.uk



Or you can send the form by post to:

West Midlands Secure Data Environment
R&D
1st Floor
ITM
Heritage Building
Queen Elizabeth Hospital Birmingham
B15 2TH



If you change your mind, you can opt back in.



You can do this by filling in a form on our website:

[www.westmidlandssde.nhs.uk/
yourdata/local-data-opt-out/](http://www.westmidlandssde.nhs.uk/yourdata/local-data-opt-out/)

Other rights you have



If you want to opt out of research and work to make health and care services better in the whole of England, you can find out more on this website: www.nhs.uk/your-nhs-data-matters/.



Or you can call 0300 303 5678.

Find out more



You can look at our website here:

<https://westmidlandssde.nhs.uk>



You can email us for information about the West Midlands Secure Data Environment at:

WMSDE@uhb.nhs.uk

This Easy Read booklet was produced by easy-read-online.co.uk